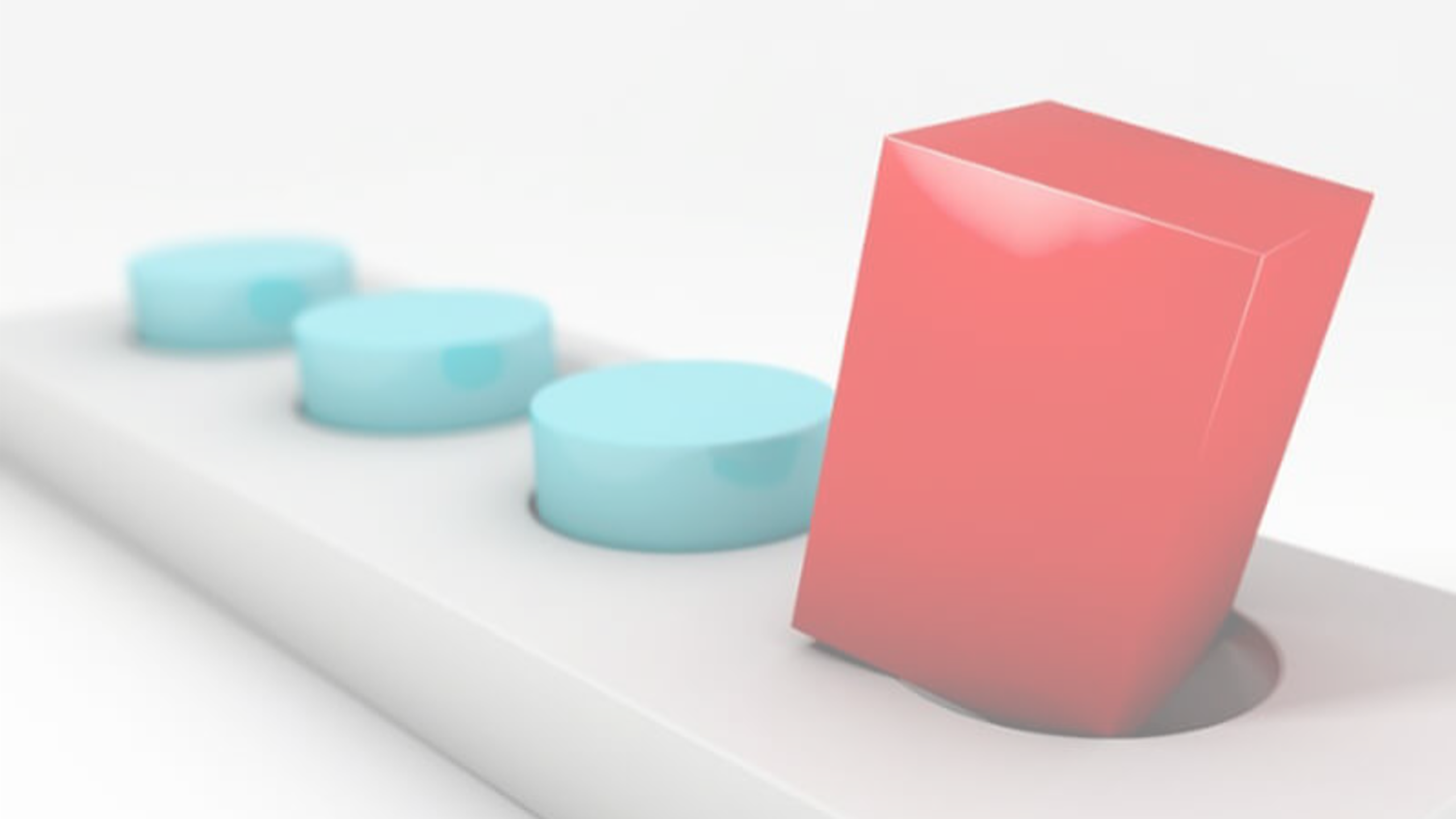


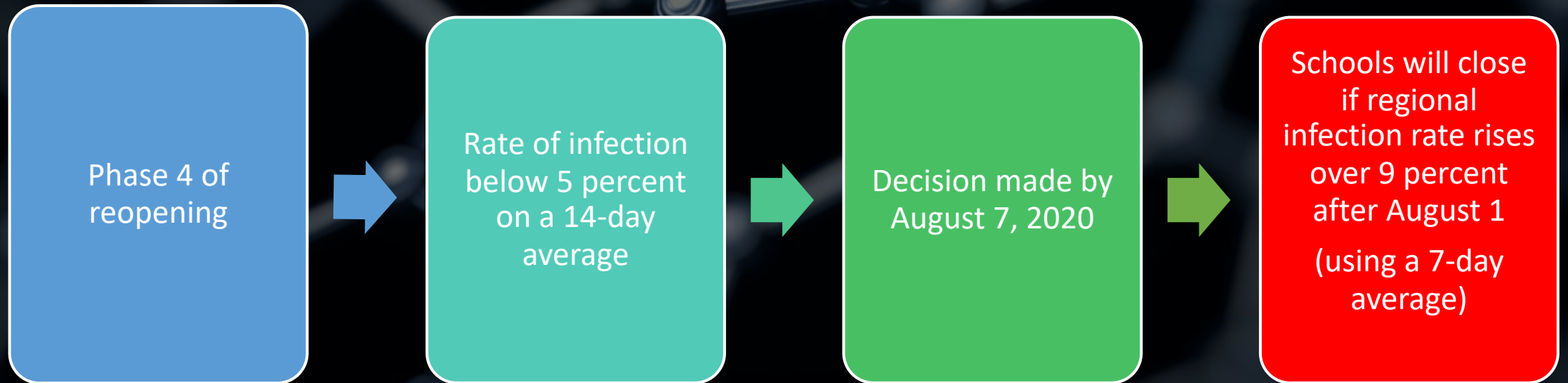
Plan to Reopen Schools

July 30, 2020





Governor's Parameters to Reopen Schools on Long Island



Planning Process



Reopening Task Force, made up of over 200 students, parents, teachers, administrators, staff and community members.

Task force members assigned to working groups to develop recommendations.



Working Groups

Building Logistics &
Operations

(Chair: Rosemary Johnson)

Elementary Curriculum
Instruction, Professional
Development, &
Technology

(Chair: Dr. Gaurav Passi)

Physical Health and
Safety

(Chair: Allison Rushforth)

Secondary Curriculum
Instruction, Professional
Development, &
Technology

(Chair: Dr. Gaurav Passi)

Student Services

(Chair: Allison Rushforth)

Social & Emotional
Health

(Chair: Allison Rushforth)

Reopening Plan: Guiding Ideas



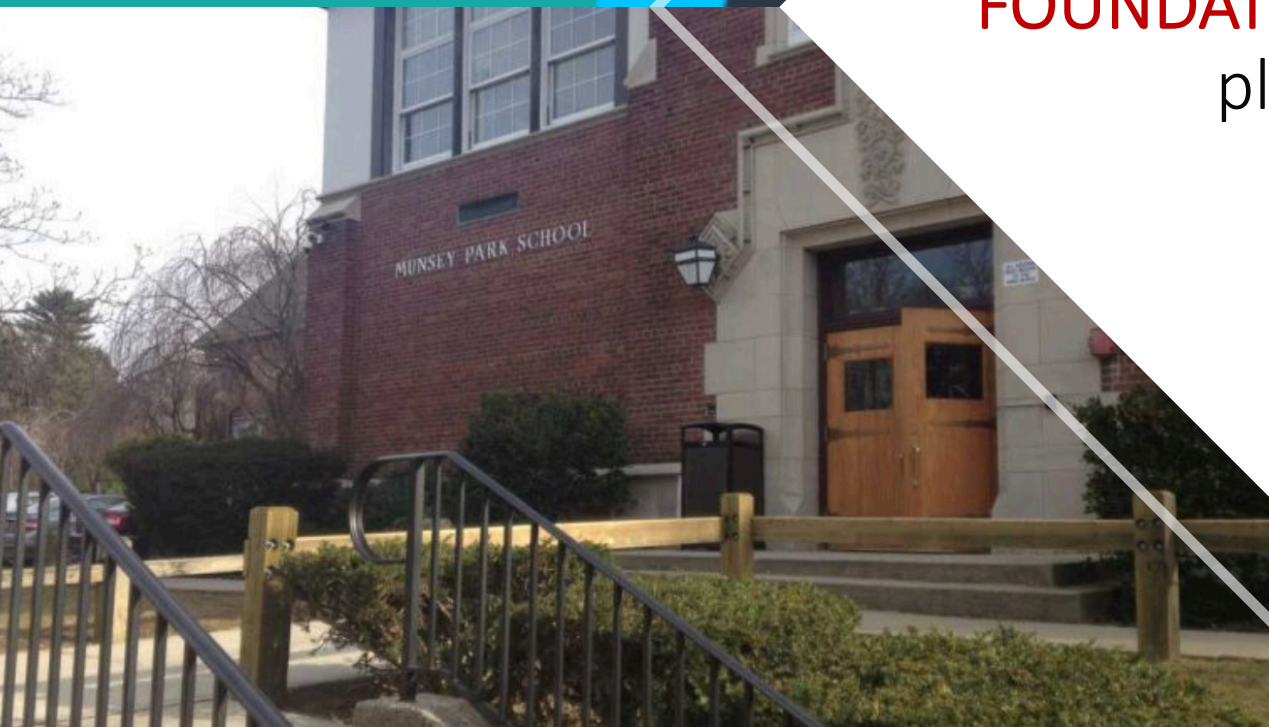
- Establish protocols to ensure the safe return of students and adults to the physical school buildings.
- Ensure that any instructional model that is proposed allows us to complete the entire breadth of the curriculum.
- Ensure equitable access to the curriculum, instruction and support.
- Ensure that the various instructional models allow for the fluid transition between a full return of all students to their school building, a Hybrid Model of Instruction (a combination of onsite instruction and remote instruction), and a fully Remote Instruction Model.



Formal Guidance



Health and Safety is the
FOUNDATION of our
plan





Mitigation
begins before
arrival



TEMPERATURE CHECK

Prior to entering a school building each person must check their temperature to ensure that it is under 100.0 degree F.



HEALTH SCREENING ATTESTATION

Prior to entering a school building each person must complete and submit a health screening attestation.



MASKS/FACE COVERINGS

Students and adults should also ensure that they have two face-coverings with them each day. Face coverings will be provided for those who forget theirs at home.

Upon Arrival to School

- Each Building will develop a protocol, in accordance with District guidance, to:
 - verify that students and staff have checked their temperature,
 - completed the health screening attestation, and
 - have the required face covering before entering the school.



District will provide all students and staff with training to know the signs of illness

Know the symptoms of COVID-19, which can include the following:



Confirmed Case Protocols

If a student or staff member reports having tested positive for COVID-19:

- School administrators will notify the local health department to determine what steps are needed for the school community.
- The school will follow the most recent guidance from the New York State Department of Health and the New York State Education Department.

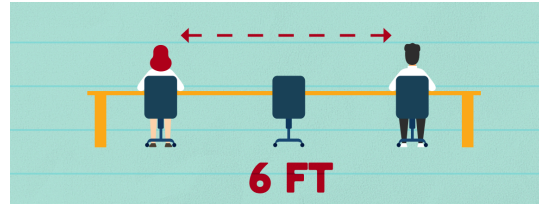


In School Mitigation

In School Mitigation



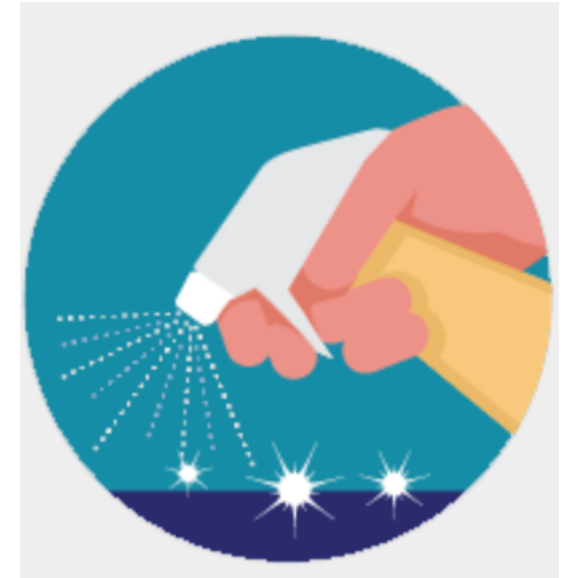
Masks/Face coverings must be worn at all times, except for lunch and scheduled mask breaks.



Social Distancing will be maintained.



Eliminate sharing supplies whenever possible.



Comprehensive cleaning guidelines will be followed

In School Mitigation




Elementary Schools: Special Area Teachers will travel to the classroom. Lunch will be served in the classroom.



Secondary School: Steps taken to reduce density in the building. To achieve social distancing, lunch will be served in two locations, the cafeteria and middle school gym.



District will maximize the use of mechanical and passive ventilation sources in all of its facilities to optimize ventilation.

A photograph of a yellow school bus parked on a street. Two students, a girl in the foreground and a boy further back, are walking towards the bus. The girl is wearing a striped backpack and white sneakers. The boy is wearing a backpack and shorts. There are cars parked along the street and a brick building in the background. A large, semi-transparent white circle is overlaid on the right side of the image, containing text.

Transportation

- Due to large number of students that are transported on a school bus social distancing may not be feasible.
- Masks are required to be worn on the school bus.
- The school bus will be cleaned/ disinfected daily.

Scheduling and routing plans are underway.

Instructional Models



Onsite/Hybrid Model

Guiding Ideas:

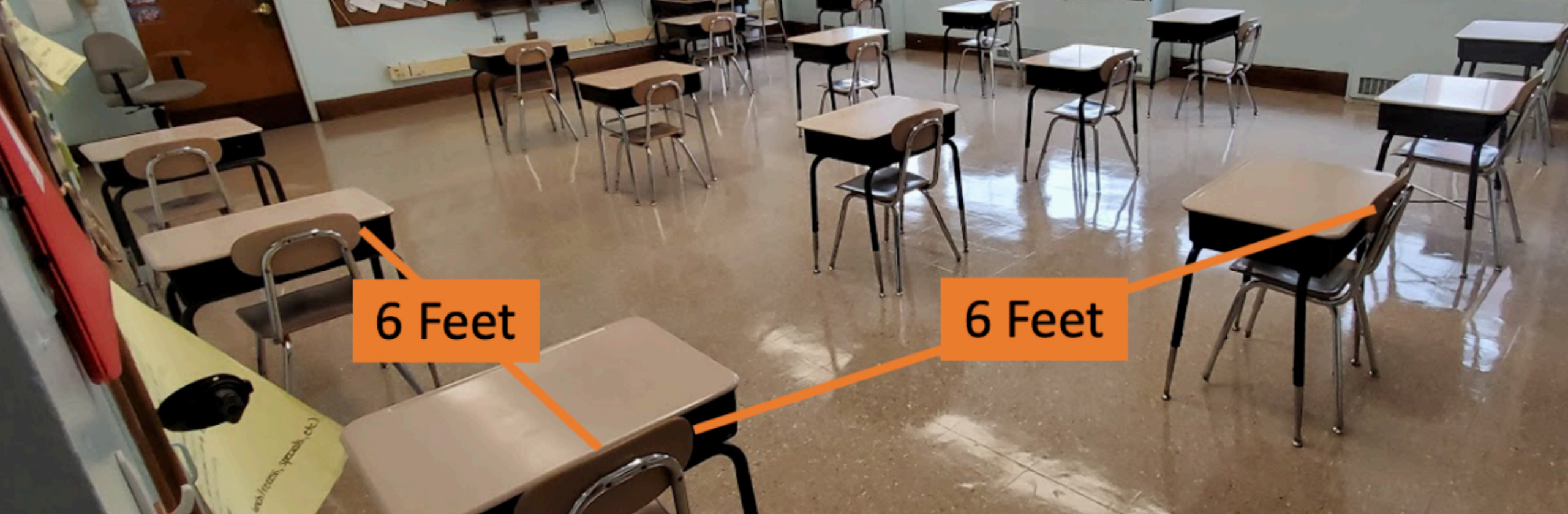
- Ensure that any instructional model that is proposed allows us to complete the entire breadth of the curriculum.
- Ensure equitable access to the curriculum, instruction and support.
- Ensure that the various instructional models allow for the fluid transition between a full return of all students to their school building, a Hybrid Model of Instruction (a combination of onsite instruction and remote instruction), and a fully Remote Instruction Model.

NYSED Room Capacity Calculator

Based on the percentage of useable space, NYSED provides four calculation options:



Social Distancing Model	Number of Student based on 80% usable space in 600 Sq Ft Room
6x6 Block	13
6 ft. Circle	17
8x8 Block	8
8 Ft. Circle	10



Classroom Capacity

Determined by calculating the number of students and teachers who can safely maintain 6 feet of social distancing.

Hybrid Classroom Setup

Teacher's
Zoom View



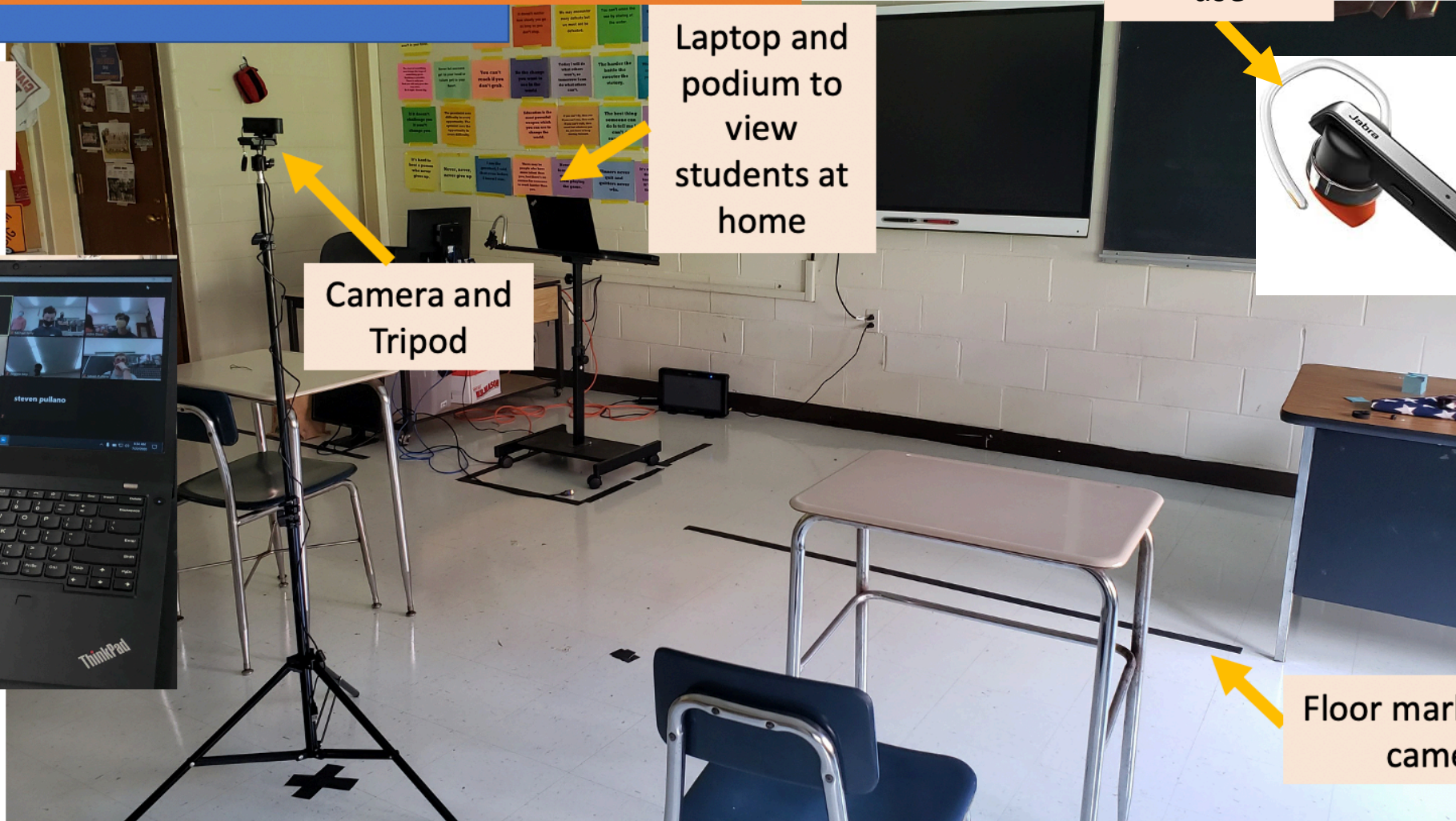
Camera and
Tripod

Laptop and
podium to
view
students at
home

Microphone
for teacher
use



Floor markings indicate
camera view



Elementary Onsite/Hybrid Model



What we know for sure:

Plan allows for all elementary students to attend school onsite every day.



Elementary Experience:



All elementary students return to school onsite:

- 100% of students in a particular grade are in classroom with classroom teacher or
- 50% of students in a particular grade are in classroom and 50% are in an onsite remote location
 - Students in onsite remote locations will participate in the classroom instruction from areas of the school building under the supervision of Teaching Assistants.

Complexities



- We have two of the largest elementary schools in Nassau County
- Larger student population at Munsey Park
- Larger square footage per classroom at Shelter Rock

What we are considering:

Option 1

100% in classrooms	50% in classroom; 50% onsite remote locations
Kindergarten Grade 1 Grade 2	Grade 3 Grade 4 Grade 5 Grade 6

Impact:

Use all available classrooms at Munsey Park.

Similar class size at both Shelter Rock and Munsey Park.

To achieve parity this model does not take advantage of the extra square footage in Shelter Rock classrooms.

Incremental hiring of teachers, teacher assistants, and supervisory aides is necessary at both Shelter Rock and Munsey Park.

What we are considering: Option 2

100% in classrooms	50% in classroom; 50% onsite remote locations
Kindergarten Grade 1 Grade 2 Grade 3 Grade 4	Grade 5 Grade 6

Impact:

Use all available classroom space at both schools.

Take advantage of extra square footage in Shelter Rock classrooms resulting in different class size in Shelter Rock and Munsey Park (based on classroom square footage).

All Kindergarten students move to Shelter Rock.

Incremental hiring of teachers, teacher assistants, and supervisory aides is necessary at both Shelter Rock and Munsey Park.

Grades 5 and 6 Class Size

Grade 5	School	Enrollment	# of Sections	In Class Group Size	Remote onsite Group Size
	Shelter Rock	102	4	15 per class (Total: 60)	42
	Munsey Park	127	5	13 per class (Total: 65)	62
Grade 6	School	Enrollment	# of Sections	In Class Group Size	Remote onsite Group Size
	Shelter Rock	110	5	15 per class (Total: 75)	33
	Munsey Park	153	6	13 per class (Total: 78)	75

A closer look at class size under options 1 and 2

Option 1: Ensures parity

Grade Level	Shelter Rock	Munsey Park
Kindergarten	15-16	15-16
Grade 1	14-15	14-15
Grade 2	14-15	13-15

Option 2: Takes advantage of all Square footage

Grade Level	Shelter Rock	Munsey Park
Kindergarten	20-21	NA
Grade 1	22	14-15
Grade 2	21-22	13-15
Grade 3	23-24	13-14
Grade 4	22	17-19



Secondary School Onsite/Hybrid Model



SECONDARY ONSITE/HYBRID MODEL

- Due to social distancing requirements of 6 feet, and the complexities of student schedules, a Hybrid Model at the Secondary School is necessary.
- 5 out of 9 period school day there are no empty classrooms

Secondary School Onsite/Hybrid Model

Students will attend class every other day and generally be separated alphabetically as follows:

- Last names that begin with A-L will attend school on "A" days.
- Last names that begin with M-Z will attend school on "B" days.

Students at home will participate in the classroom instruction via Zoom video conferencing.

Alternating Day Classes

- Odd/even day classes will repeat over two days to ensure that alternating groups of students can participate onsite.

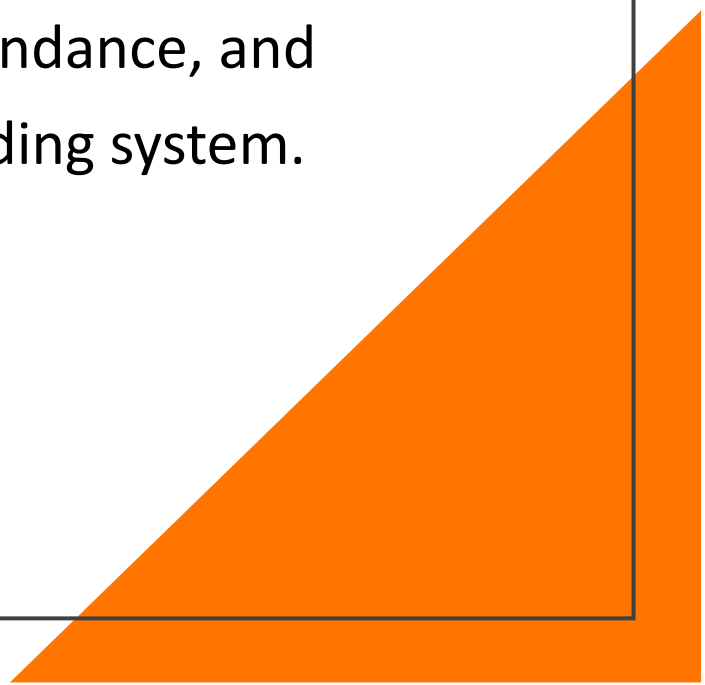
2020 SEPTEMBER

SUNDAY	MONDAY	TUESDAY	WEDNESDAY	THURSDAY	FRIDAY	
		1	2	3	4	5
	7	8 ODD Day Classes (Group A)	9 ODD Day Classes (Group B)	10 Even Day Classes (Group A)	11 Even Day Classes (Group B)	12
	14 ODD Day Classes (Group A)	15 ODD Day Classes (Group B)	16 Even Day Classes (Group A)	17 Even Day Classes (Group B)	18 ODD Day Classes (Group A)	19
	21 ODD Day Classes (Group B)	22 Even Day Classes (Group A)	23 Even Day Classes (Group B)	24 ODD Day Classes (Group A)	25 ODD Day Classes (Group B)	26
	28 School Closed	29 Even Day Classes (Group A)	30 Even Day Classes (Group B)			© B



Remote Instruction Model

Our Remote Instruction Model includes:

- live teacher-directed instruction throughout the typical school day,
 - required attendance, and
 - a regular grading system.
- 
- A large orange triangle is positioned in the bottom right corner of the slide, pointing towards the top right.

Elementary Remote Instruction Sample Schedule

Classroom teachers will provide a weekly schedule that resembles a typical onsite school day for remote instruction.

The instructional day will include:


- whole group instruction for each subject area taught during the school day (conducted via Zoom video conferencing),
- small group instruction scheduled by the teacher (conducted via Zoom video conferencing), and
- asynchronous (independent) work.

Special area teachers will meet with their students via Zoom as scheduled (Art, Music, PE, Computer, Library).

Times	M	T	W	T	F
9:00-9:20	Whole Class Check-In				
9:20-10:20	Math Whole class mini-lesson followed by independent work/small group instruction				
10:20-10:35	Brain Break				
10:35-11:15	Science: Whole class mini-lesson followed by independent work/small group instruction	SS: Whole class mini-lesson followed by independent work/small group instruction	Science: Whole class mini-lesson followed by independent work/small group instruction	SS: Whole class mini-lesson followed by independent work/small group instruction	Common Planning for Teachers
11:15-11:30	Brain Break				
11:30-12:20	Lunch				
12:20-1:05	Reading: Whole class mini-lesson followed by independent work/small group instruction	PE: <i>Synchronous/Asynchronous</i>	Reading: Whole class mini-lesson followed by independent work/small group instruction	Reading: Whole class mini-lesson followed by independent work/small group instruction	PE: <i>Synchronous/Asynchronous</i>
1:05-1:50	Writing: Whole class mini-lesson followed by independent work/small group instruction	Reading: Whole class mini-lesson followed by independent work/small group instruction	Writing: Whole class mini-lesson followed by independent work/small group instruction	Chorus*	Reading: Whole class mini-lesson followed by independent work/small group instruction
1:50-2:05	Brain Break				
2:05-2:50	Music: <i>Synchronous/Asynchronous</i>	Writing: Whole class mini-lesson followed by independent work/small group instruction	Art: <i>Synchronous/Asynchronous</i>	Writing: Whole class mini-lesson followed by independent work/small group instruction	Writing: Whole class mini-lesson followed by independent work/small group instruction
2:55-3:10	Whole Class Wrap Up				

Sample Schedule

(actual schedule to be developed and provided by classroom teacher)



SECONDARY SCHOOL REMOTE INSTRUCTION SCHEDULE

Teachers will:

- conduct class instruction via Zoom video conferencing following a modified 1-9 period bell schedule.
- begin each class period with whole class instruction.
- be available for office hours at the end of the day.

8:10 – 8:40	Period 1
8:45 – 9:15	Period 2
9:20 – 9:50	Period 3
9:55 – 10:25	Period 4
10:30 – 11:00	Period 5
11:05 – 12:30 Testing (85 minutes)	Group 1: 11:05 – 11:47
	Group 2: 11:48 – 12:30
12:35 – 1:05	Period 6
1:10 – 1:40	Period 7
1:45 – 2:15	Period 8
2:20 – 2:50	Period 9
2:50 – 3:08	Open Office Hours for all subjects

Secondary School Sample Schedule

Testing					
	Monday	Tuesday	Wednesday	Thursday	Friday
1	Social Studies	English	World Lang/ Electives	Science	Math
2	Science	Math	Social Studies	English	World Lang/ Electives

Secondary School Remote Testing Schedule

Each day includes a testing schedule by subject for teachers to administer exams to multiple sections at the same time.

A 3D rendering of a red rectangular block and three teal cylindrical blocks on a gray surface. The red block is positioned on the right side of the frame, tilted slightly. The three teal blocks are arranged in a row on the left side, receding into the background. The text "Complexities and Considerations" is overlaid in the center in a white, sans-serif font.

Complexities and Considerations

What we considered	Outcome
Using closed school buildings to house classes (e.g. St. Peters, Parkwood School).	Not available
Using portable Classrooms (trailers, tents, etc.) for instruction	SED approval process timeline is prohibitive
Reducing 6 feet social distancing by utilizing barriers	We are not comfortable recommending less than 6 feet. This is supported by our Medical Director and multiple working groups.
Not requiring masks/face coverings in the classroom	We are not comfortable recommending that masks/face coverings not be worn at all times. This is supported by our Medical Director and multiple working groups.
Bringing in 7 th graders 100% of the time	5 out of 9 periods there are no classrooms available. There is not enough space in the Secondary School
Impact of families opting for 100% remote instruction	Parent decision for 100% remote instruction is non-binding therefore, we must plan for all of our students in each model



Before Arrival



Health and Safety
Protocols



COVID-19 Positive
Case Protocols



Child Nutrition



Transportation



Onsite/Hybrid
Instruction Model



Remote Instruction
Model



Athletics & Extra-
Curricular Activities



English Language
Learners



Special Education



Social and
Emotional Health



Technology



Teacher and
Principal Evaluation
Systems and
Certifications

Reopening Schools Next Steps

- Submit plan to NYSED on July 31
- Communication: [Reopening Website](#)
- Develop building based protocols
- Complete Hiring
- Complete purchasing
- Survey faculty and staff
- Survey families (transportation, return to school)
- Consider adding two Superintendent's Conference days for staff training thereby delaying the first day of school to September 10, 2020
- Establish a panel of health experts for ongoing guidance and review